

Business Plan
2022-2024
**YARLOOP
PRIMARY
SCHOOL**



*Steaming from the past
Learning for the future.*



MISSION To provide quality education in a caring environment so that each child maintains a positive attitude to learning and achieves their full academic, physical, social and emotional potential

VISION Every child every day engaged in quality programs and effective learning.

VALUES **Learning:** There is a clear and positive approach to learning and it is encouraged in others;
There is a shared belief that all students have the capacity to learn;
Teachers use quality data to inform planning and to cater for differentiation to the curriculum to meet the needs of our students.

Excellence: There is a high standard of academic achievement and behaviour expected of our students and ourselves;
Teaching and Learning is structured to enable all students to feel a sense of achievement and to meet expectations;
All staff work together in a professional, collegiate manner with open lines of communication between colleagues.

Equity: the differing circumstances and needs of students are recognised and there is dedication to achieving the best possible outcomes for all;

Care: Our relationships are based on trust, mutual respect and the acceptance of responsibility. All staff work towards ensuring the workplace and learning environment is safe throughout the school.

OUR AIMS

1. For every student to achieve the standards expected of them at their particular year of schooling with a focus on Literacy, Numeracy and Science.
2. To have sound teaching in every classroom, based upon planned and organised activities to meet student needs.
3. To make Yarloop Primary School increasingly a school of choice by providing a safe and friendly learning environment where student behaviour is well managed and parents and student are actively involved and engaged in student learning.
4. To provide practical support for all our staff through professional development, and providing opportunities for staff to work collaboratively to achieve common outcomes.
5. To be accountable for:
 - our students learning and achievements
 - our work environment
 - financial management
 - use of human resources



SUCCESSFUL LEARNERS

Teaching Quality

At Yarloop Primary School there is a shared understanding centered on the tenets of positive approaches to student interactions and a belief that every student has the ability to learn and improve.

This will look like:

- Whole school approaches to teaching English, Science and Mathematics embedded in school practice.
- Age appropriate and targeted instruction programs in Literacy and Numeracy.
- Staff continuing to develop collaborative, whole school approaches to teach and promote positive social behaviour for students based on our Positive Behaviour Program (PBS).
- Evidence of teaching staff utilising scope and sequence documents aligned to the Western Australian Curriculum.
- The implementation of a whole school, evidence based explicit and instructional teaching model. School wide beliefs of Yarloop Primary Schools pedagogy and effective teaching practices are understood and accepted.
- Staff continuing to support students to improve and maintain their social and emotional well-being through individual case-management.
- Early Childhood remaining a priority and staff continuing to use the National Quality Standard Framework.
- A school instructional framework that meets the needs of students, supported by the evidence base of currently acknowledged best practice.
- A cycle of planning, teaching, evaluating and reflecting is used to facilitate continuous improvement.

The implementation of strategic plans for Literacy and Numeracy



Hands Up for Kids Reading Program



A collaborative whole school approach to teach and promote positive social behaviour through PBS



The implementation of a whole school attendance strategy

2022 Focus

LEARNING ENVIRONMENT

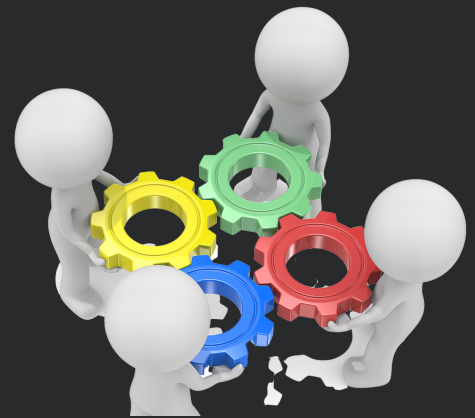
RESPECT - UNITY - LEARNING - EXCELLENCE

Yarloop Primary School takes a student centred approach to the provision of innovative and contemporary Learning Spaces.

This will look like:

- Positive Behaviour Schools (PBS) initiative is interwoven into the curriculum and is a key component of a school wide approach to student behaviour management.
- Students at educational risk are identified, provided intervention and support strategies and monitored regularly for improvement and further modification if required.
- The breakfast program is embedded into school programming, it is supported and co-run by student leaders.
- The school will actively seek the voice of its students and formally recognise their input in the decision making processes.
- Adequate functional and resourced teaching spaces for specialist programs, such as music and Science, Technology, Engineering and Math (STEM).
- Quality Teaching and Learning occurring throughout the school.

Continued Implementation of Positive Behaviour Schools (PBS)



Students at educational risk are identified and given appropriate support.
Toe-by-toe program data assessed



Breakfast Club held twice a week co-run by student leaders and staff



Teaching spaces created for specialist programs such as STEM and Music

2022 Foci

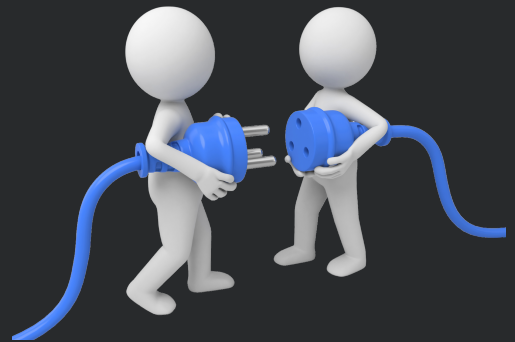
LEADERSHIP

Yarloop Primary School has a culture of accepted responsibility among staff to provide and demonstrate leadership throughout the school. The Principal has a capable workforce and has established in staff a sense of trust in each others skill sets.

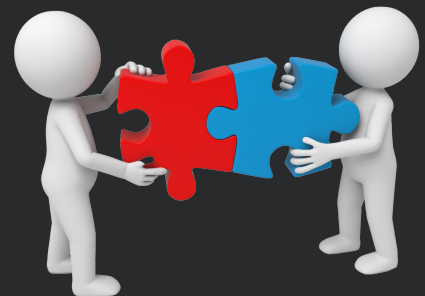
This will look like:

- Continue to review plans and programmes for school improvement.
 - Focus on School Review questions-
 - How are we going? (Judgement)
 - How do we know? (Evidence)
 - What are we doing to improve? (Planning)
- Plan for 2024 School Review.
- Review of Performance Management outcomes and professional development for staff
- Professional Learning to link to whole school planning and drive staff development
- Continued development of distributed leadership with staff taking on key roles in programs and initiatives .
- Implement the schools strategic vision and business plan. Ongoing consultation to ensure that the vision is incorporated into, and supported by, explicit plans in the classroom.
- Align the work of School of Special Educational Needs Disability (SSEND) to meet the professional development of the schools education assistants.
- Skills obtained by the education assistants applied with all students to maximise learning outcomes creating a learning rich environment.

Ongoing Review of Plans and Programmes for school improvement



Implement a continuous performance management cycle.



Ensure processes are in place to allow staff to work collaboratively.



Further develop the expertise of Education Assistants.

2022 Focus

STUDENT ACHIEVEMENT AND PROGRESS

Yarloop Primary School has an innovative approach to growing the academic achievements of students. This is elevated through rigorous disciplined dialogue.

This will look like::

- The annual review of key school data, including presentation at staff meetings to track student progress (academic and social and emotional). The use of evidence to analyse programmes using this to form the basis to enhancing teaching and learning in the classroom.
-
- Explicit targets for student success throughout the school. Staff consultation with families on these targets and data informed evidence of how the school community works together to achieve them.
-
- Academic and non academic progress and achievement of students is communicated to families through a range of community-inclusive mediums and events, to ensure all are fully informed and engaged in their children's learning journey.
-
- A broad suite of diagnostic tools and intervention programs deployed to detect and plan for the needs of students in their learning. This informs both whole-school and individual staff planning.

Annual Community Events Fathers Night,
Mothers Morning Tea & Presentation
Night



Promotion of the school through
Facebook with the addition of a school
Website .



Play Cafes held through the year to
introduce 0-4 year olds to the school
environment.



A thriving P&C and a strong and proactive
School Board.

2022 Foci

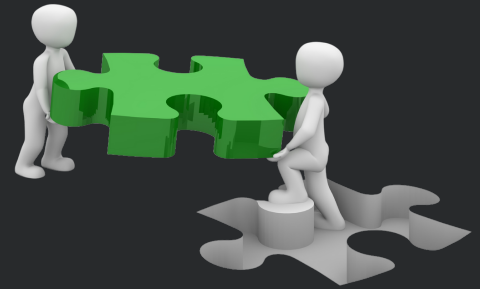
RELATIONSHIPS AND PARTNERSHIPS

Yarloop Primary School embraces the role of being a central community asset. This status is reflected in its ability to communicate openly with the community and its efforts in extending education out of the classroom through events that engage adults and students

This will look like:

- Annual community events continuing to be held throughout the year; Fathers Night -significant male role model in students life, Presentation Night, Faction Carnival, Mothers morning tea - significant female role model in students life, Wattle Carnival, Assemblies, Student Leaders Meetings.
- Continued promotion of the school through Facebook and community posts.
- An Instagram account linked to the school Facebook account.
- A school Website which is a one stop shop of information giving parents access to forms and enrolment packages and providing the School Board and P&C a forum for parent and community information.
- The continuation of the schools 0-4 year old program, Play Cafe.
- A thriving P&C.
- A continued relationship with external groups such as Western Australian Police, HUG's (Harvey Ukelele Group) Aboriginal Elders and Hands Up 4 Kids.
- A strong and proactive School Board that is engaged in school decision making and having representation from families, community and school staff.

Annual Community Events, Fathers Night, Mothers Morning Tea Presentation Night



Promotion of the school through Facebook with the addition of a school Website .



Play Cafes held over the year to introduce 0-4 year olds and parents to the school environment.



A thriving P&C and a strong and proactive School Board.

2022 Focus

USE OF RESOURCES

A measured and fiscally prudent approach to distribution of resources , with compliance to Departmental regulations balanced carefully with the strategic needs of the school.

This will look like::

A collaborative and transparent process for the annual budget that includes a draft phase and final phase on receipt of student funding at the beginning of each year.

Use of the collective expertise of school staff, the marketing potential of points of difference and the supportive community culture, to promote the good reputation of the Yarloop Primary School to position it to become a school of choice.

The school actively enlisting supplementary financial assistance to support school programs from community groups, the P&C and local agencies and businesses.

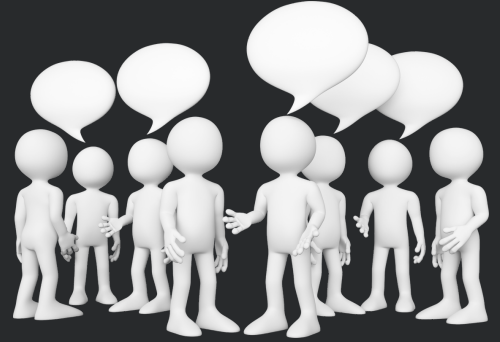
Resources are allocated strategically in a way that ensures that our use of ICT is sustainable and meets future needs.

Resources are maintained to a high standard with continued planning to allocate funding to reserve accounts for future purchases.

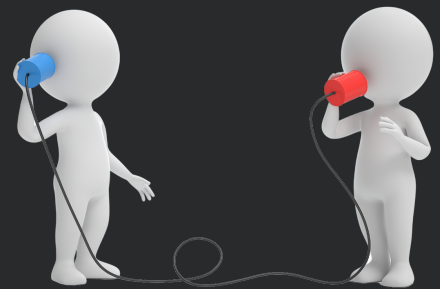
Resources (including staff time, expertise, funding, facilities and materials) are applied in a targeted manner to meet the learning and well-being needs of all students in the school.

- Leasing of technology rather than purchasing
- Use school and strategy review processes to identify resource replacement or upgrades required.
- Budget for the replacement and upgrades of class and general resources.
- Continue to allocate funding to reserve accounts for future purchases.

Targeted funding received in the schools one line budget is allocated to meet the needs of students



Marketing of points of difference
example Music program, Playcafe,
small school setting



Continued Partnerships with external
groups for funding



Evaluation of Lease versus Buy for
Technology

TARGETS

1. NAPLAN

Set an upward trend for the number of students making moderate or better progress in NAPLAN Reading, Writing, Spelling, Grammar & Punctuation and Numeracy in Year 3 and 5

2. ATTENDANCE

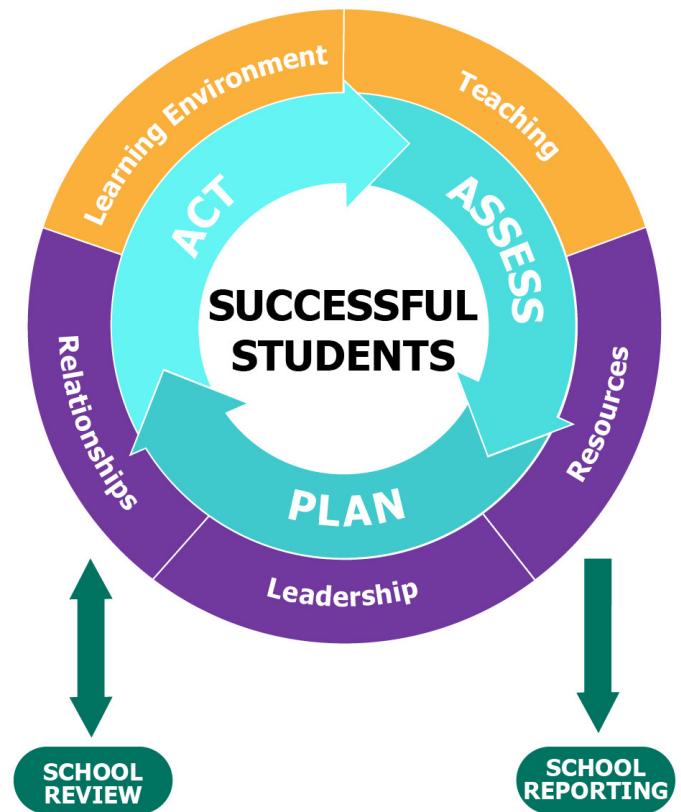
Based on Schools Online Data the percentage of students with regular attendance (90%) consistently exceeds Like Schools

3. PAT ASSESSMENT

Improve the performance of students in each year level on ACER Progressive Achievement Tests for Numeracy, Reading, Grammar and Science

4. COMMUNITY ENGAGEMENT

Enhance engagement practices with parents and families that are responsive to their needs and concerns, areas of strength identified through parent/student surveys



Yarloop Primary School will undergo a School Review in 2024. The school will use the Department's Electronic School Assessment Tool to self assess against the above 6 Domains.

The school focus is to meet all relevant criteria against this improvement tool in 2024.

